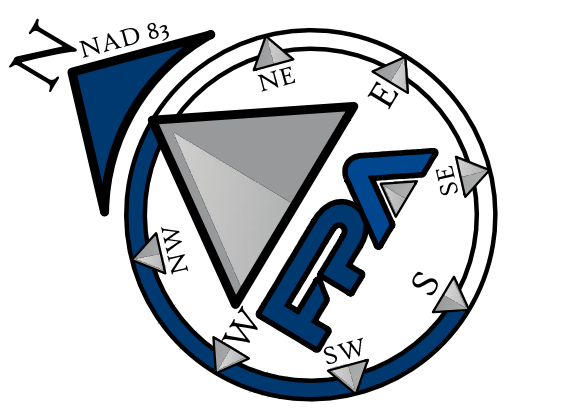


NOTES:

- BOUNDARY INFORMATION SHOWN HEREON IS BASED ON MAP REF. No. 1
- INFORMATION SHOWN HEREON WAS OBTAINED IN THE FIELD BY FRENCH & PARRELLO ASSOCIATES, BETWEEN JULY 10TH THROUGH JULY 15TH OF 2019.
- THE HORIZONTAL AND VERTICAL DATUM REFERENCED ON THIS SURVEY ARE BASED ON GPS OBSERVATIONS AND ARE RELATIVE TO NAD 83/NAVD 88 ADJUSTMENT.
- THE NORTH ARROW INDICATED ON THIS PLAN IS BASED ON GPS OBSERVATIONS AND IS RELATIVE TO THE NEW JERSEY PLANE COORDINATE SYSTEM (NAD83).
- ANY UNDERGROUND UTILITIES SHOWN HEREON ARE BASED ON ABOVE GROUND OBSERVATIONS, UTILITY MARKING FOUND IN THE FIELD AND/OR INFORMATION SUPPLIED BY THE UTILITY COMPANIES. SINCE NO PHYSICAL LOCATION OF THE UNDERGROUND FACILITIES HAVE BEEN MADE BY THE UNDERSIGNED, NO GUARANTEE IS BEING MADE FOR THEIR COMPLETENESS OR ACCURACY.
- THE UNDERSIGNED PROFESSIONAL IS NOT QUALIFIED TO MAKE ANY DETERMINATION AS TO THE EXISTENCE OR NON-EXISTENCE OF HAZARDOUS MATERIALS. THEREFORE, NO STATEMENT IS BEING MADE OR IMPLIED HEREON, NOR SHOULD IT BE ASSUMED OR CONSTRUED THAT ANY STATEMENT IS BEING MADE BY THE FACT THAT NO EVIDENCE OF HAZARDOUS MATERIALS IS PORTRAYED HEREON. THE CLIENT SHOULD PURSUE THESE MATTERS SEPARATE AND APART FROM THIS SURVEY.
- IF THIS DOCUMENT DOES NOT CONTAIN THE RAISED SEAL OF THE UNDERSIGNED PROFESSIONAL, IT IS NOT A VALID COPY OF THE SURVEY AND NO LIABILITY IS ASSUMED FOR THE INFORMATION SHOWN HEREON.
- THIS SURVEY AND THE INFORMATION SHOWN HEREON IS PRIVILEGED AND HAS BEEN PREPARED FOR THE EXCLUSIVE USE FOR ROGER MUMFORD HOMES FOR DESIGN PURPOSES ONLY. THIS SURVEY AND THE INFORMATION CONTAINED HEREON CANNOT BE USED FOR ANY OTHER PURPOSE WITHOUT THE WRITTEN PERMISSION OF THE UNDERSIGNED PROFESSIONAL.
- WETLANDS INFORMATION SHOWN HEREON IS BASED ON A FIELD DELINEATION PERFORMED BY FRENCH & PARRELLO ASSOCIATES ON JULY 25, 2019.

MAP REFERENCES:

- A MAP ENTITLED, "PLAN OF SURVEY PREPARED FOR LOT 31, BLOCK 124, SITUATED IN THE BOROUGH OF RUMSON, MONMOUTH COUNTY, NEW JERSEY," PREPARED BY FRENCH & PARRELLO ASSOCIATES, DATED JULY 24TH, 2019.
- A PLAN ENTITLED, "5 FEET TOPOGRAPHIC GRID PLAN, PREPARED FOR A PORTION OF OSPREY LANE, BOROUGH OF RUMSON, MONMOUTH COUNTY, NEW JERSEY," PREPARED BY FRENCH AND PARRELLO ASSOCIATES DATED JULY 21, 2020.
- THE OFFICIAL TAX MAP OF THE BOROUGH OF RUMSON, MONMOUTH COUNTY NEW JERSEY, SHEETS 44, 45, & 47.



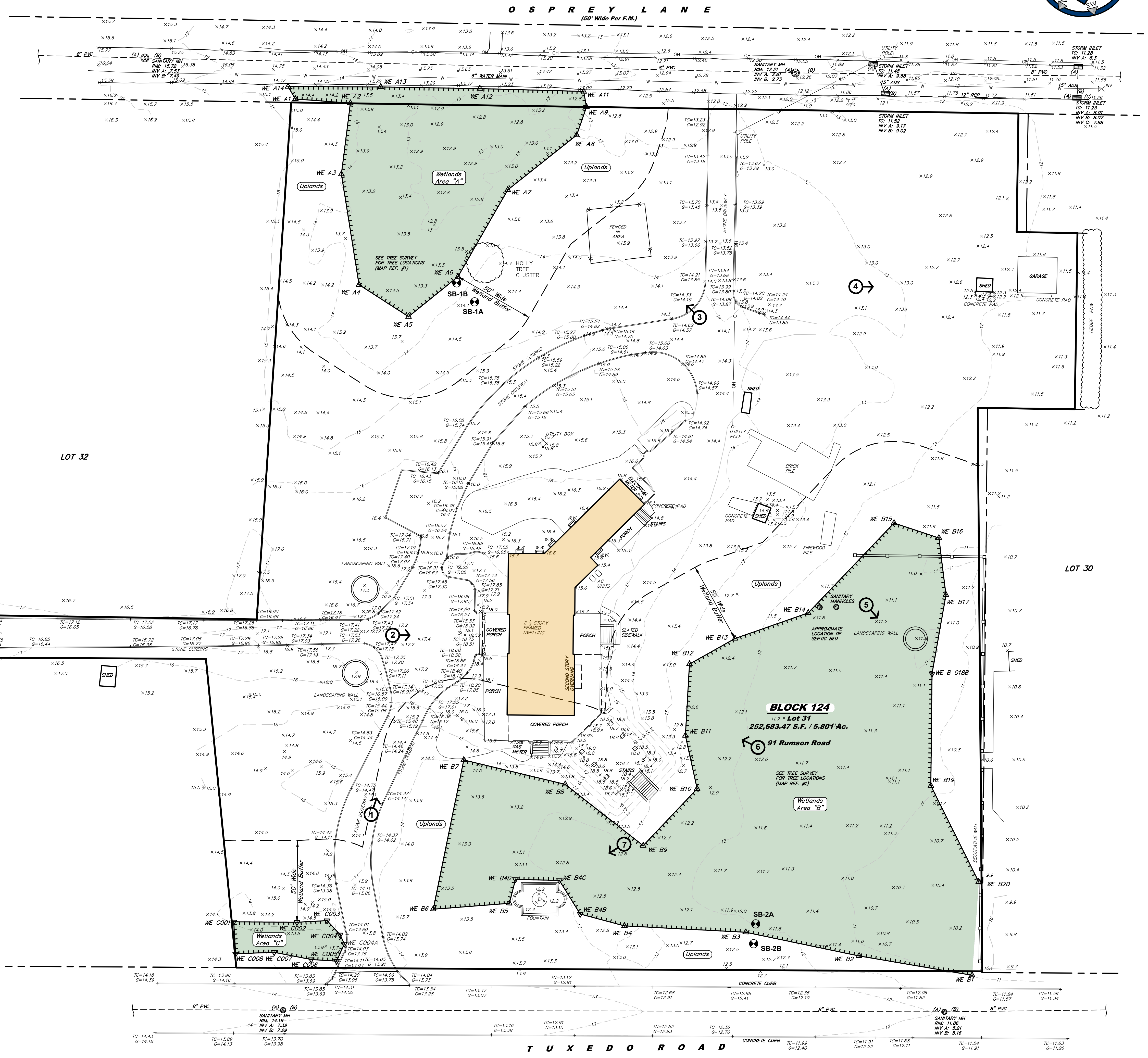
WETLAND FLAG COORDINATE TABLE (NAD83)		
FLAG I.D.	Northing (feet)	Easting (feet)
WE A1	557111.6997	633007.4589
WE A2	557081.4485	633022.5712
WE A3	557063.8409	632982.4503
WE A4	557019.7933	632929.8837
WE A5	556983.7333	632928.6595
WE A6	556970.3165	632965.2812
WE A7	556971.4642	633026.4872
WE A8	556952.4643	633076.9583
WE A9	556956.1562	633094.8222
WE A11	556962.5579	633102.1181
WE A12	557018.0080	633070.9498
WE A13	557070.6398	633040.6391
WE A14	557119.4110	633011.7064

WETLAND FLAG COORDINATE TABLE (NAD83)		
FLAG I.D.	Northing (feet)	Easting (feet)
WE B 01B8	556596.2730	632905.6460
WE B1	556480.3846	632759.7963
WE B2	556545.8458	632734.3805
WE B3	556612.8694	632711.7772
WE B4	556678.6218	632676.3812
WE B4B	556705.5710	632668.6700
WE B4C	556727.0710	632679.7940
WE B4D	556750.4710	632666.5720
WE B5	556746.2015	632652.0289
WE B6	556784.3390	632624.9809
WE B7	556815.2327	632713.0450
WE B8	556754.3015	632732.1520
WE B9	556694.0022	632724.4620
WE B10	556683.5342	632771.3164
WE B11	556706.4504	632795.9928
WE B12	556726.7804	632834.4625
WE B13	556710.8998	632862.2004
WE B14	556680.5058	632898.6828
WE B15	556663.6410	632972.9378
WE B16	556635.3419	632979.1621
WE B17	556613.7706	632951.4753
WE B19	556561.7101	632846.4557
WE B20	556506.2862	632810.9661

WETLAND FLAG COORDINATE TABLE (NAD83)		
FLAG I.D.	Northing (feet)	Easting (feet)
WE C001	556885.2300	632555.6050
WE C002	556851.8280	632575.2970
WE C003	556836.5060	632585.6200
WE C004	556825.2370	632582.2750
WE C004A	556820.1370	632578.8310
WE C005	556818.7760	632567.3140
WE C006	556832.5680	632560.1940
WE C007	556854.3450	632552.3370
WE C008	556874.1711	632539.3894

LEGEND

- X 123.45 SPOT ELEVATION
- X BC 123.45 BOTTOM OF CURB ELEVATION
- TC 123.45 TOP OF CURB ELEVATION
- X BW 123.45 BOTTOM OF WALL ELEVATION
- TW 123.45 TOP OF WALL ELEVATION
- FF 123.45 FINISHED FLOOR ELEVATION
- - - 123.45 MINOR CONTOUR
- - - 130.00 MAJOR CONTOUR
- FENCE LINE
- SIGN
- WATER VALVE
- W.W. WINDOW WELL
- ⊙ PHOTO LOCATIONS
- SB-3A SOIL LOGS
- ☆ LIGHT POLE
- UTILITY POLE
- ⊙ SANITARY SEWER MANHOLE
- ⊙ STORM DRAINAGE MANHOLE
- DRAINAGE INLET
- APPROXIMATE LOCATION OF UNDERGROUND STORM DRAINAGE PIPE
- APPROXIMATE LOCATION OF UNDERGROUND SANITARY SEWER PIPE
- APPROXIMATE LOCATION OF UNDERGROUND WATER LINE
- APPROXIMATE LOCATION OF UNDERGROUND ELECTRICAL LINE
- OVERHEAD WIRES
- ▨ WETLANDS LINE



No.	Date	Revision	By	Checked By
1	09.29.2020	ADDED WETLAND BUFFERS	D.S.B.	T.J.E.
2	09.11.2020	UPDATE WETLANDS LINE INFORMATION	D.S.B.	T.J.E.
3	07.21.2020	UPDATE TOPOGRAPHIC INFORMATION ALONG OSPREY LANE	D.S.B.	T.J.E.
4	03.16.2020	ADDED WETLANDS INFORMATION	B.E.	T.J.E.
5	08.07.2019	ADDED WETLANDS INFORMATION	L.S.W.	T.J.E.

FRENCH & PARRELLO ASSOCIATES

Corporate Office
1800 Route 34, Suite 101
Wall, NJ 07719
732.312.8800

Regional Offices
Camden, NJ
Haddonfield, NJ
New York, NY

THOMAS J. ERTL, PLS
PROFESSIONAL LAND SURVEYOR, N.J. Lic. No. 24C0383400

WETLANDS & TOPOGRAPHIC SURVEY PLAN

PREPARED FOR
LOT 31, BLOCK 124
SITUATED IN THE
BOROUGH OF RUMSON
MONMOUTH COUNTY, NEW JERSEY

DATE: 7/24/2019 DESIGNED BY: SCALE: 1"=30' PROJECT NUMBER: 15053.001
DRAWN BY: B.E. CHECKED BY: T.J.E. FIELD BOOK SHEET: 1 of 1

L:\SUBJECT\15053.001 - LTOP.RA.DWG (30x42 SHEET 1) - RUMSON ROAD TOWNHOMES RUMSON RD RUMSON, NJ 07000 - CAD\15053.001 - LTOP.RA.DWG (30x42 SHEET 1)