

Mayor's Message  
June 2016

Dear Residents,

We are fortunate to live in a beautiful town situated between two rivers and close to the ocean. However, this proximity means Rumson is at times at risk from flooding and, in turn, the rivers are at risk of being polluted by runoff and debris. The Borough has made many improvements since Superstorm Sandy to enhance emergency preparedness and minimize the impact of flooding, and there are several simple steps residents can take to support our wastewater management system and help keep our surrounding environment clean.

### Wastewater Management – a Higher Level of Preparedness

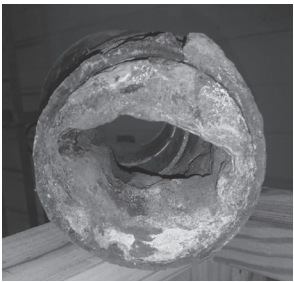
Rumson has 11 pump stations and over 54 miles of sewer pipes, which pump over 1.3 million gallons of sewage per day. Since Superstorm Sandy, the stations have all had significant upgrades, including flood-proofing improvements, installation of new pumps, new electronics, permanent generators, and more sophisticated alarm systems. Thus, the stations are more efficient and we have better control. We have utilized grant funding where available to reduce the burden on local taxpayers..

### Keeping our Pipes Clean Takes Individual Effort & Results in Big Savings

RJ Sickler, DPW's Assistant Foreman of Wastewater Management, asks residents to help maintain pipe health in two keys ways: "First, please do not flush wipes down the toilet. There is no such thing as 'flushable' wipes, even if labeled as such. The wipes do not dissolve and they often cause blockages, resulting in thousands of dollars in damage each year.



Second, please do not pour cooking grease and oil down the drain. Grease clogs the drains and the Borough must spend thousands of dollars cleaning pipes each year."



### Improvements to Reduce Flooding

Rumson has installed "duck bill" valves on the end of drain pipes in West Park, which helps reduce the flooding effects of abnormally

high tides.

### Help Keep Pollution out of Storm Drains

Rumson does not have a combined sewer system. This means pollution on streets and yards is washed by rain into storm drains, then directly into the rivers and ocean, untreated. Pesticides, fertilizer, oil, detergents, pet waste, grass clippings and more end up in our rivers. Storm water pollution is one of New Jersey's greatest threats to clean and plentiful water. There are several simple steps residents can take to help keep our water clean.

- Properly use, store, and dispose of hazardous products – do not pour down storm drain. Use natural or less toxic alternatives when possible and recycle used motor oil.
- Limit use of pesticides and fertilizer. Do not apply if heavy rain predicted. Consider less toxic alternatives.
- Place trash and recycling in proper receptacles.
- Pet sanitation – pick up after your dog and place waste in proper receptacle, not storm drain.
- Grass – "cut and leave" on lawn, do not put grass clippings in trash or place on curb with leaves.
- Keep sticks & leaves out of storm drains – debris clogs drains. See the brush and leaf fall pickup protocol and schedule

posted on DPW page of Borough web site.

### Green Day Recycling

Rumson's Green Day Recycling initiative occurs in May and October each year, in which residents bring electronics and books to be recycled and materials to be shredded. In 2015, the popular program collected 18,800 pounds of shredding, 12,220 pounds of electronics, and 8,400 pounds of books from an estimated 400 cars. Green Day is funded by a Recycling Tonnage Grant, not taxpayer dollars.

### General Rumson Recycling Rules

Municipalities in Monmouth County generate tons of garbage each year. Most is transported to a landfill in Tinton Falls, where it will stay forever. Currently, only about 52% of the garbage in Monmouth County is recycled. Recycled items do not go into the landfill, which saves money and protects the environment.

Rumson utilizes single-stream recycling and residents are asked to recycle newspaper/mixed paper, cardboard, and acceptable plastics, per Monmouth County guidelines. The Borough offers bi-monthly curbside pickup. Residents may also drop off permissible items at the Rumson Recycling Center behind the DPW building. [PHOTO of Larry & kids at Recycling Center]!

### DO Recycle through Borough

- Cardboard (shipping boxes, chipboard (i.e., cereal boxes, frozen food boxes), paper towel cores, tissue boxes)
- Mixed Paper (newspaper, junk mail, envelopes, white/color office paper, catalogues, non-metallic wrapping paper, greeting cards)
- Recyclable plastics, rinsed clean, without caps, not crushed
- Glass ~~food and beverage jars~~
- Metal cans, tin, aluminum, bi-metal, rinsed

### Recycle Green Day Only

Electronics, books, bulk paper shredding.  
Please do not place any recyclable items in plastic bags.

### Items Not Accepted through Borough Recycling



Deane-Porter students visit the Recycling Center

- Caps and lids for plastic or glass containers
- lastic bags, dry cleaning bags, margarine tubs, diaper wipes containers, yogurt cups, clear salad containers, food storage containers, drinking straws
- Hard plastics, such as toys, cartridges
- Aluminum foil, plates, trays or cookware
- Food wrappers, paper plates & cups, napkins, paper towels
- Newspapers used for pet waste or household cleaning projects
- Styrofoam container packaging
- Regular glassware, windows, ceramic dishware, lightbulbs

Note: Some of the items listed above can be recycled through individual effort. See Monmouth County Reclamation web site listed at the end of this newsletter for more information.

### Hazardous Waste

Hazardous waste must be disposed of at the Monmouth County Household Hazardous Waste Facility. For a list of acceptable items and hours, please visit the MCHHWF web site listed below.

### Bulk Pickup

Residents may schedule a bulk pick up twice yearly, which is scheduled through the Borough. Most Bulk pick up items end up in the landfill. Please consider donating or recycling usable items.

### Regular Trash (Landfill)

Garbage is collected twice a week on a zone schedule, published on the Borough web site.

- Non-recyclables
- Non-compostable food waste
- Household batteries A-D are landfill, but “button” batteries are considered hazardous waste

### Environmental Commission Recycling Olympics

BRONZE: Recycle – separate and recycle the basics through the

### Summer Events...

- **Kelleher Kids Triathlon**, Sunday, June 12, Victory Park. Details at [www.raceforum.com/kidstri](http://www.raceforum.com/kidstri)
- **R&FH Movies in the Park** – Jun 29, July 23, Aug 12, Sep 9 – see [www.rumsonrec.org](http://www.rumsonrec.org) for details
- **“9/11 Memorial Trees Stand Tall”** Presentation, Friday, May 6th, 6:30pm, RFHRHS Auditorium
- **Rumson Recreation Fall Registration due June 15** – see [www.rumsonrec.org](http://www.rumsonrec.org)

### Useful Recycling & Sanitation Web Sites

- Rumson Borough Schedules & Information - [www.rumsonnj/departments/collection.htm](http://www.rumsonnj/departments/collection.htm).
- Monmouth County Recycling - [www.visitmonmouth.com/reclamation](http://www.visitmonmouth.com/reclamation)
- Monmouth County Household Hazardous Waste Facility - <https://co.monmouth.nj.us/page.aspx?ID=2258>

Borough collection, including mixed paper/cardboard/recyclable plastics

SILVER: Pre-Cycle – use reusable/refillable drinking containers and re-usable shopping bags

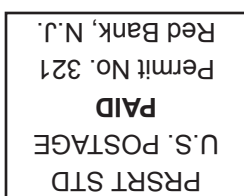
GOLD: Reduce food waste – Menu plan, eat leftovers, & compost

Recycling saves taxpayers money and helps protect the environment – it is also the law in NJ. Thank you for your cooperation.

\$\$\$



**RUMSON BOROUGH BULLETIN**  
**POSTAL CUSTOMER LOCAL**  
**RUMSON, NEW JERSEY 07760**



BOROUGH OF RUMSON  
RUMSON, NEW JERSEY 07760